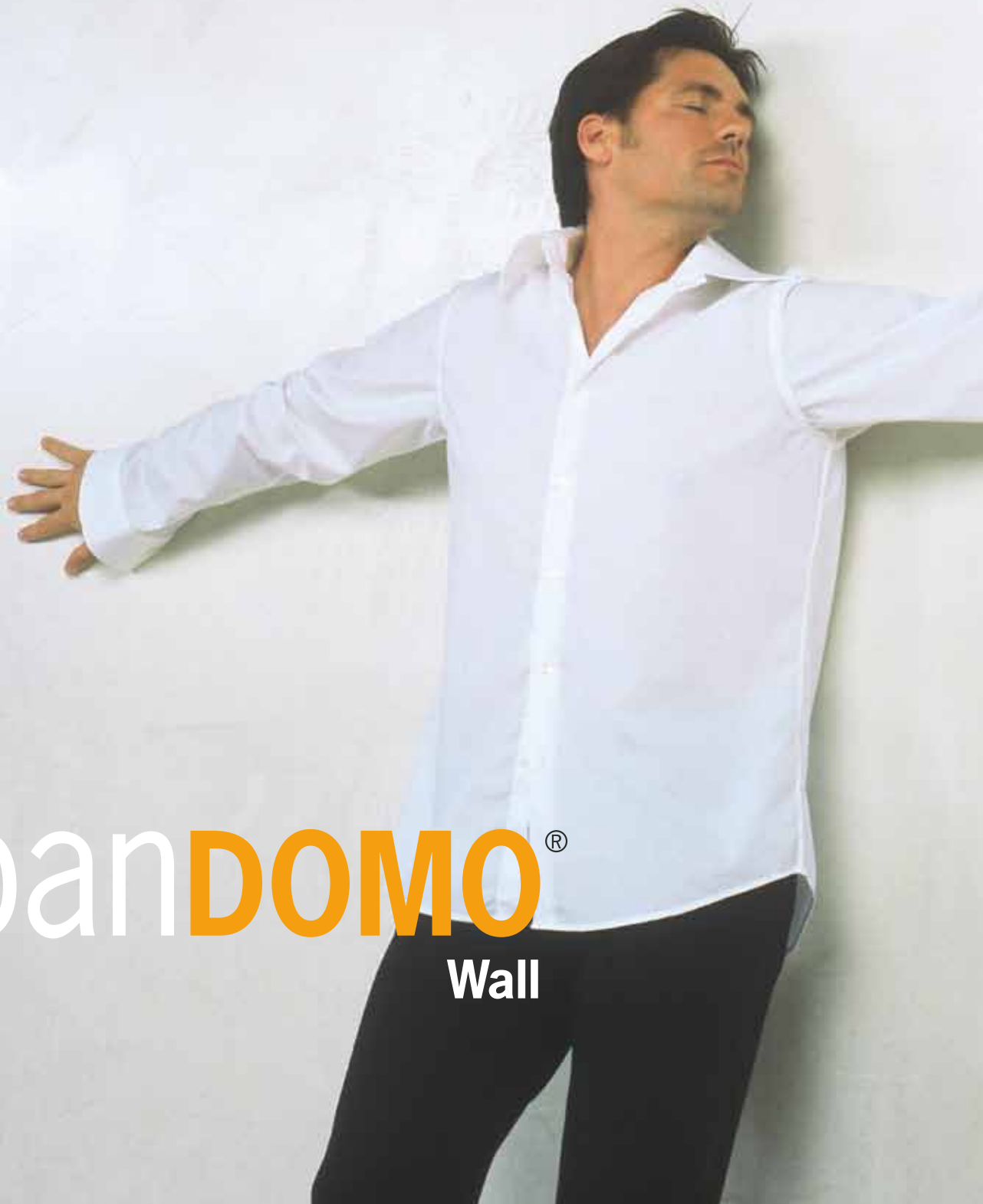




THE REVOLUTION ON THE WALL.

- **New colours!**
- **New formulations!**



panDOMO®
Wall

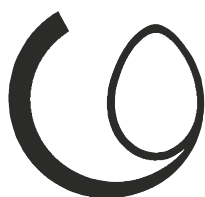
A revolution for walls!

Use the surfaces of a room as a creative space to make an impression. With colours and structure, worlds can be created. PANDOMO® Wall is fast and easy to use, with only a few simple steps to follow to design a surface. Unlike other decorative finishing renders, PANDOMO® W1, the white cement-based decorative render, forms a distinctly harder and yet breathable surface. The effect: a beautiful, smooth and resilient wall finish. The surface is impregnated with a special oil, which is totally absorbed, leaving no trace of moisture whilst ensuring the surface is dirt resistant to protect against staining. The advantage: marks can be sponged off the surface with exceptional ease. Another inbuilt advantage is that oiled areas can be re-treated at any time. So even years later it remains possible with PANDOMO® Wall to create new effects at any time and at little cost.

Design prize 2007.

The excellent properties of PANDOMO® Wall have been recognised by the Federal Ministry of Economics and Technology with the Design prize in 2007 of the German Federal Republic.

Century Hall (Jahrhunderthalle), Bochum:
PANDOMO® Wall on walls and ceiling.
Architects: Petzinka, Pink and Partner



DESIGNPREIS
2007

NOMINEE



Century Hall (Jahrhunderthalle), Bochum:

PANDOMO Wall on walls and ceiling.

Architects: Petzinka, Pink and Partner

New possibilities for all rooms:



For individual solutions.

Wherever demanding customers like a special ambience, PANDOMO® Wall offers an exclusive wall and ceiling finish.



Exclusive surface finish.

Give yourself creative scope in interior design. PANDOMO® Wall provides numerous ways of achieving harmoniously co-ordinated areas of colour and texture. So you will find just the right solution for the most diverse living environments.



Placing accents with PANDOMO®.

Where off-beat designs are looked for, strong colours enliven the ambience. With its many versatile texturing and colouring possibilities, PANDOMO® Wall provides an elegant means of giving rooms a distinctive character.



Design Element Colour – Unlimited Possibilities.

PANDOMO® Wall offers the best selection of colours. Each shade can be individually changed. The five colour schemes - light, natural, pure, bright, accent – offer the perfect introduction to room design. The colour schemes initially designed for PANDOMO® by Johannes Klinger combine tradition, nature and trends to offer a valuable guide when choosing colours.

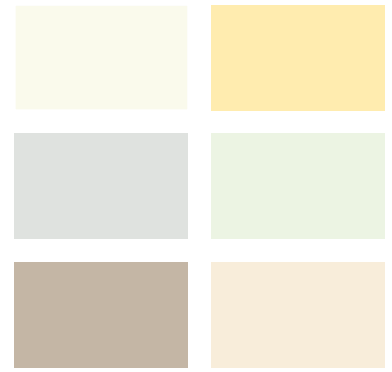
“A huge breadth of design possibilities was developed on the basis of current trends in art and lifestyle. Five different colour groups, combining classics, nature and a sense of time and according with the currently important design trends, provide a valuable aid for their use.”

Johannes Klinger, Artist, Master Church Painter, Interior Designer

The PANDOMO® colour groups

1. Light

Light-coloured walls enhance a room's visual appeal and have a stimulating effect on our mood.



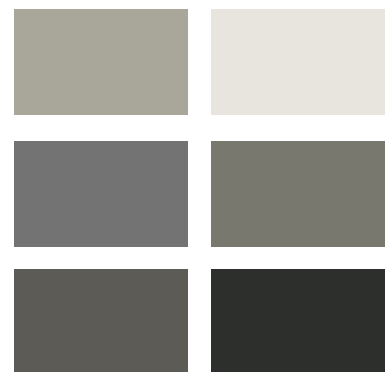
2. Natural

The muted colours of the natural shades impart a sense of security. In the room these colours often have the effect of diffused, soft daylight.



3. Pure

Achromatic greys are close to the colours we see in nature; they come across as "real". They are excellent at letting the room, shapes and other colours speak for themselves.



4. Bright

The theme running through these colours is joy at being alive. They are inspired by travels to southern countries, whose colours have been adapted to our light conditions.



5. Accent

A confident colour accent stimulates the human imagination. Saturated colours have a markedly energizing or exciting effect.



Quick and easy to apply.

Two people can complete a wall area of approximately 50 m² within eight hours. Fast and well. A key influencing factor for both yourself and more importantly your customer. It takes only a few operations to completely surface an area with PANDOMO® Wall. To put especially creative ideas into effect and for example incorporate other elements in the wall finish or mark off areas of colour from one another individually the application may take a little longer. Almost all surfaces, such as concrete, cement and lime-cement plasters, gypsum plasters, plasterboard, and also tiles and floor coverings, alkyl finishes, emulsion paints and many more, make suitable substrates. The small number of operations makes PANDOMO® Wall easier to apply than other types of surface. You only need one material, which you can moreover apply very sparingly.



PANDOMO® floor, wall and ceiling finishes and also some furniture finishes made with PANDOMO® Wall and PANDOMO® Floor in the "House of the Present" ("Haus der Gegenwart") in Munich.

Making-up of colour made easier – by optimised pack handling:

1. The required quantity of colour is removed from the PANDOMO® CC can with a spraying kit. The PANDOMO® CC colour-concentrate packs provide further advantages for the user in handling and process reliability: they are rimless inside, making them even easier to empty completely. Their inner lid ensures no sloshing while in transit, guaranteeing clean removal of the required amount of colour. The tamper-proof closure mechanism enables the user to see at once whether the pack has been opened previously.



2. From the sprayer the measured quantity of colour is added to the mixing water.

3. 5 kg of PANDOMO® W1 powder is stirred vigorously into 2.5 litres of pre-tinted water, yielding a lump-free mortar.

4. After a maturing period of approximately 3 minutes the mortar is thoroughly stirred again.



Production of single-colour smooth-textured PANDOMO® Wall:



1. The material is applied with a smoothing trowel.



2. The surface is smoothed off and textured with a doctor blade.



3. After an hour the area is rubbed down with water using a sponge or sponge board.



4. Then give a polished stucco finish using a venetian smoothing blade.



5. After approx. 4 – 5 hours the surface is polished with a suitable eccentric grinder using a grinding disc with an abrasive grain size of 120.



6. PANDOMO® SL stone oil is then applied thinly and excess oil wiped off with a lint-free cloth.



7. The finished surface.

Production of single-colour slate-textured PANDOMO® Wall:



1. The material is applied with a smoothing trowel.



2. The surface is textured using an old smoothing trowel.



3. After approx. 4 – 5 hours the sharp points are broken with a suitable eccentric grinder using a grinding disc with an abrasive grain size of 80.



4. The surface is then polished with a grinding disc with an abrasive grain size of 120.



5. Next, PANDOMO® SL stone oil is applied thinly and excess oil wiped off with a lint-free cloth.



6. The finished surface. The shade used is black.

Production of two-colour slate-textured PANDOMO® Wall:



1. The material is applied with a smoothing trowel.



2. The surface is textured using an old smoothing trowel.



3. After approx. 4 – 5 hours the sharp points are broken with a suitable eccentric grinder using a grinding disc with an abrasive grain size of 80.



4. The second colour is scraped thinly on to the surface with a venetian smoothing blade.



5. After approx. 3 – 4 hours the surface is polished with an eccentric grinder using a grinding disc with an abrasive grain size of 120.



6. PANDOMO® SL stone oil is then applied thinly and excess oil wiped off with a lint-free cloth.



7. The finished surface.

PANDOMO® Wall – All the advantages at a glance:

- Individual, versatile design possibilities.
- Elegant, smooth and textured surfaces.
- High quality and exclusiveness.
- Fluid transitions from walls and ceiling possible.
- One material required for both walls and ceilings.
- Incorporation of other materials possible.
- Almost any shade mixable.
- The areas treated with PANDOMO® SL stone oil are breathable and essentially dirt-resistant.
- Impact-resistant, hard-wearing surfaces.
- Later re-treatment of the oiled areas is possible at any time.
- Processing time: approximately 30 minutes.
- Quick and easy to apply.
- High coverage.

Take possession of a new theme in wall design. It provides you with economic advantages and gives you a unique selling point from the competition, as you would be offering your customers a previously unknown form of premium quality. Make use of the "revolution on the wall" to position yourself in the market.

For further information regarding PANDOMO® Wall please contact our PANDOMO® hotline:
02302-664-505.

ARDEX GmbH

Friedrich-Ebert-Straße 45

58453 Witten

GERMANY

Tel.: +49 (0) 23 02/664-505

Fax: +49 (0) 23 02/664-437

pandomo@ardex.de

www.ardex-pandomo.de



The photographs reproduced in this prospect are copyrighted. Unauthorised utilization is unacceptable and may involve claims to forbearance and compensation for damage.

Please observe our product data sheets. We assume the warranty for the perfect quality of our products. Our handling recommendations are based on trials and practical experience; they can, however, only be regarded as general advice without a quality warranty, as we have no influence on work site conditions and the execution of the work. Country specific recommendations, depending on local standards, codes of practice, building regulations or industry guidelines, may effect specific installation recommendations.